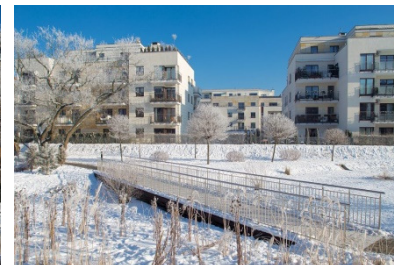
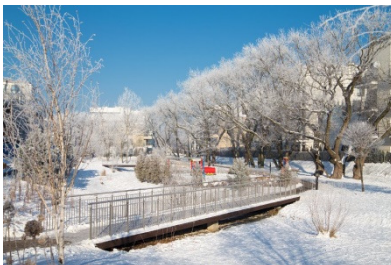


# FPP Review

4Q15

*2,500 apartments sold*





*Internal lake, green areas, and playground area in Ostoja-Wilanów, Warsaw (January 2016).*

## FPP. The Firm

---

- FADESA POLNORD POLSKA (FPP).

FPP is a real estate developer deeply rooted in the Polish local market. FPP has been present in Poland since May 2005, focusing on the construction of medium to high-standard apartments. The company has two shareholders: Spanish MARTINSA-FADESA (51% interest) and Polish POLNORD (49% interest). The company operates in Warsaw and Wroclaw. As at 31 December 2015, FPP had sold 2,567 and delivered 2,366 apartments. In the last seven years, the average annual sales revenues totalled 150 million zloty. The financing for FPP projects is provided by PEKAO S.A. and GETIN NOBLE S.A. banks.

- Promotions:

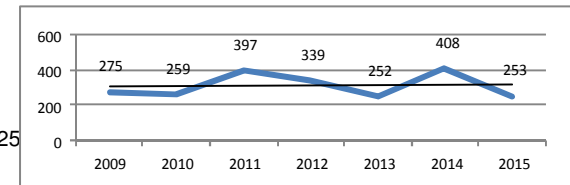
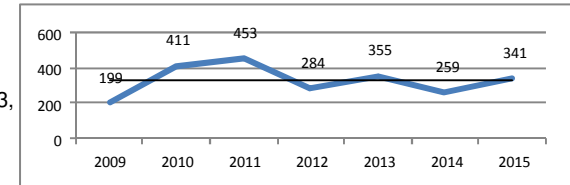
- Ostoja-Wilanów, Warsaw (1,965 units). [www.ostoja-wilanow.com](http://www.ostoja-wilanow.com)
- Osiedle-Innova, Wroclaw (535 units). [www.osiedle-innova.com](http://www.osiedle-innova.com)
- Osiedle-Innova II, Wroclaw (542\* units).
  - *Apartamenty Innova* (buildings 6.4 and 6.5: 210 units). [www.apartamentyinnova.pl](http://www.apartamentyinnova.pl)
  - *Apartamenty Innova II* (building 6.3: 120 units). [www.apartamentyinnova.pl](http://www.apartamentyinnova.pl)
- Osiedle Moderno, Wroclaw (158 units) [www.osiedlemoderno.pl](http://www.osiedlemoderno.pl)
- Villa Botanica, Powsin-Warsaw (343\* units). [www.villa-botanica.com](http://www.villa-botanica.com)

**FPP: comprehensive study of apartment layout, strict cost control, high gross margins.**



## FPP. Key Data

- **2,567 apartments sold** as at 31 December 2015.
- **2,302 apartments sold** from 2009 to 31 December 2015. See chart to the right (presales per year). (199 units sold in 2009; 411 units sold in 2010; 453 units sold in 2011; 284 units sold in 2012; 355 units sold in 2013, 259 units sold in 2014; 341 units sold in 2015). **AVERAGE (2009-2015): 329 u/y.**
- **756 apartments sold in Wroclaw** (as at 31 December 2015).
- **2,366 units delivered** as at 31 December 2015.
- **2,183 units delivered** from 2009 to 31 December 2015. See chart to the right (deliveries per year). (275 units delivered in 2009; 259 units delivered in 2010, 397 units delivered in 2011, 339 units delivered in 2012, 253 units delivered in 2013, 408 units delivered in 2014; 253 units delivered in 2015). **AVERAGE (2009-2015): 312 u/y.**



2015 data:

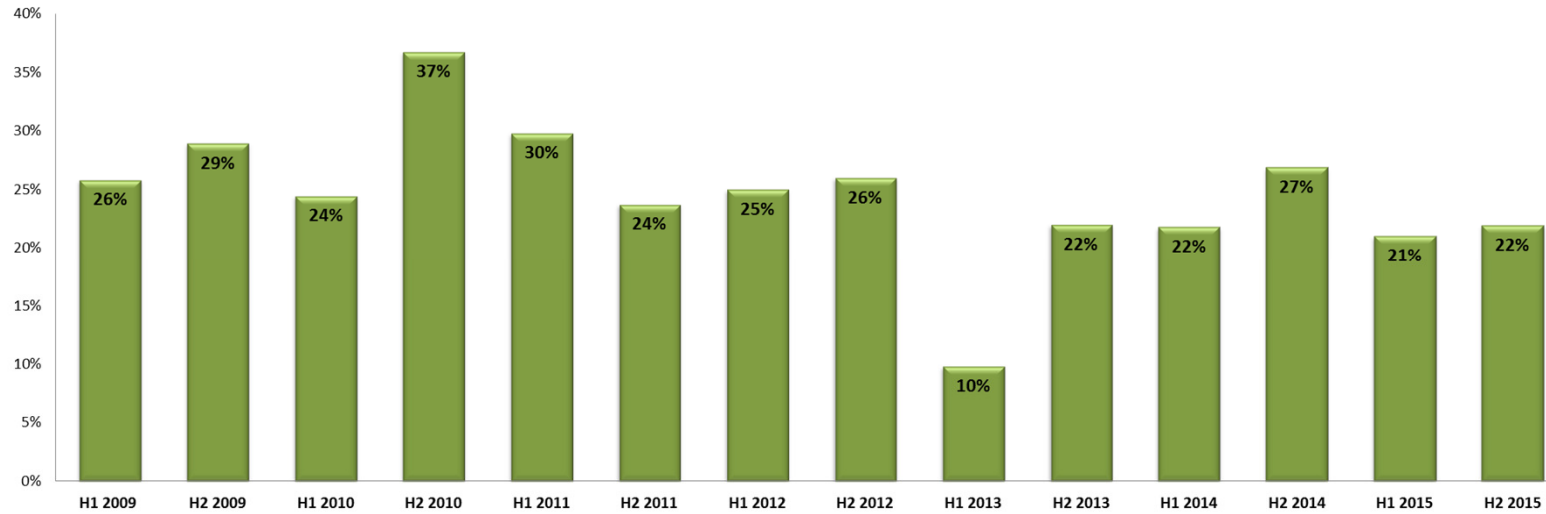
- Presales: **341 units.**
- Deliveries: **253 units.**

- **Financing:**
  - Bank PEKAO S.A. (Unicredit Group): *Ostoja-Wilanów* in Warsaw (since 2006) and *Osiedle Innova* in Wroclaw (from 2011 to 2014).
  - GETIN NOBLE S.A.: *Osiedle-Moderno* (from 2013 to 2015) and *Apartamenty Innova, buildings 6.4 and 6.5* (since March 2015) in Wroclaw.

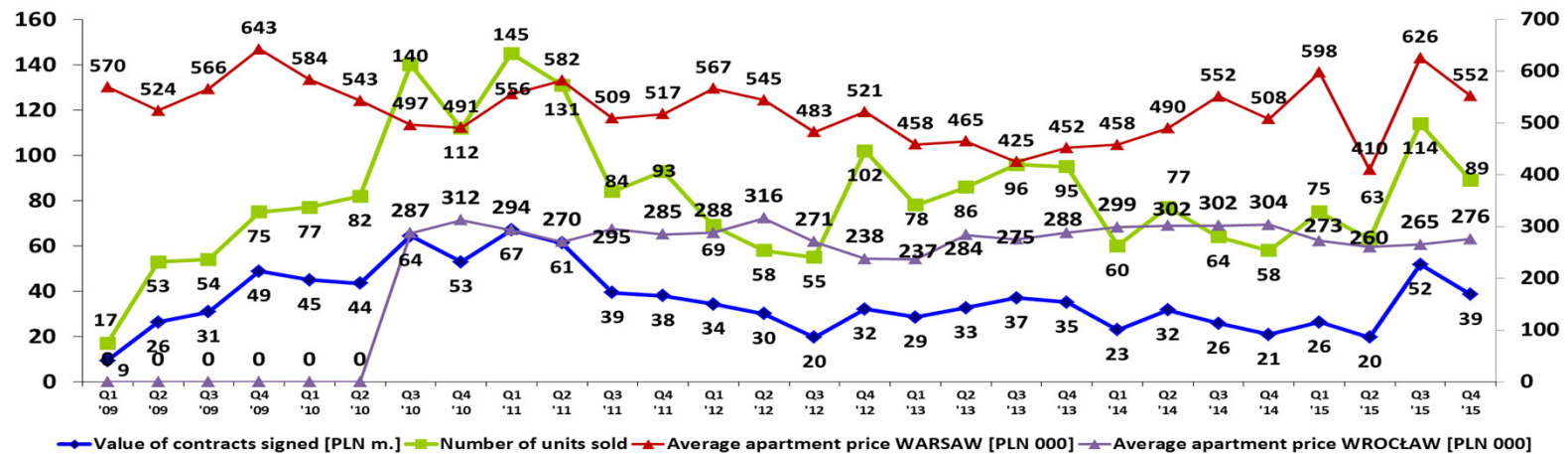


# Relevant Information

- Gross Margin (since 2009).



- Quarterly Presales (since 2009).

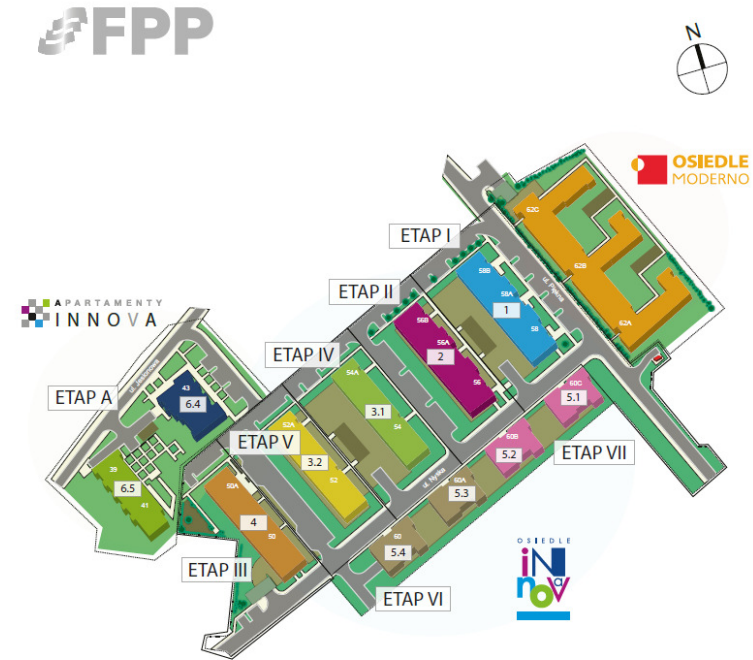


# FPP, Projects in Poland

Ostoja-Wilanów, Warsaw (1,929 residential units).



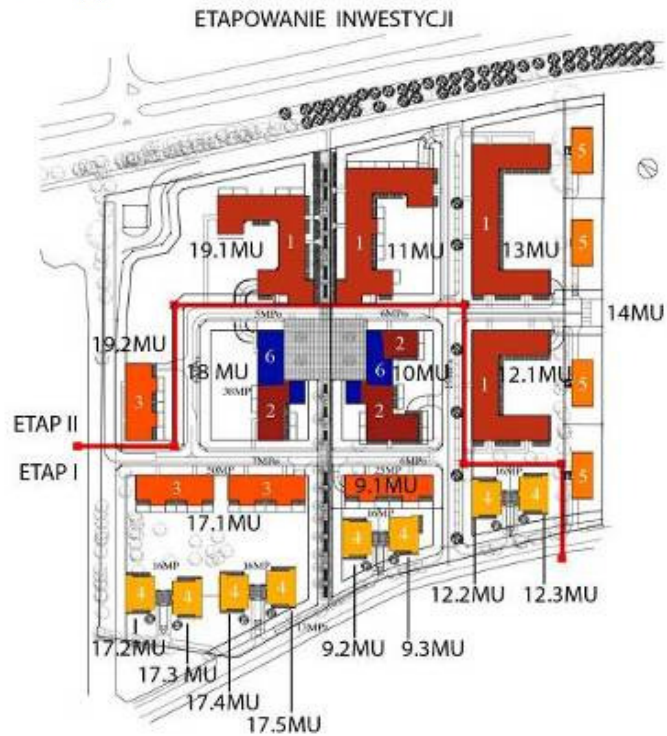
Osiedle-Innova (531 residential units),  
Osiedle-Moderno (158 residential units),  
Apartamenty-Innova, stage A (206 residential units), Wroclaw.



	IŁOŚĆ MIESZKAN	IŁOŚĆ LOKALI USŁUGOWYCH	IŁOŚĆ MIEJSC POSTOJOWYCH W GARAZU
<b>APARTAMENTY INNOVA</b>	206	4	244
<b>OSIEDLE INNOVA</b>	531	4	504
<b>OSIEDLE MODERNO</b>	158	-	189

# FPP, Projects in Poland

Villa Botanica, Powsin, Warsaw (343\* residential units).



	Stage 1	Stage 2
Number of units	132	211*



*Osiedle Moderno, Wrocław (October 2015) .*





## FPP in Usable Floor Area (Polish PUM in square meters).

- **Completed** (as at 31 December 2015):
  - **16 stages:** 8 in Ostoja-Wilanów, Warsaw, and 8 in Wroclaw (7 in Osiedle-Innova and 1 in Osiedle-Moderno).
  - **2,449 apartments completed:** 1,760 units in Warsaw and 689 units in Wroclaw.
  - **177,156 sq. m completed:** 142,119 sq. m in Warsaw and 35,037 sq. m in Wroclaw.
- **Units completed and unsold** (as at 31 December 2015):
  - **2,243 sq. m** completed and unsold (1,213 sq. m residential and 1,030 sq. m commercial).
    - **17 apartments** completed and unsold in building B4 in Ostoja-Wilanów, Warsaw (1,071.4 sq. m residential).
    - **6 commercial units** in Ostoja-Wilanów, Warsaw (1,030 sq. m commercial).
    - **3 apartments** completed and unsold in building Osiedle-Moderno, Wroclaw (141.7 sq. m residential).
- **Under construction** (as at 31 December 2015):
  - **2 stages** (1 in Warsaw and 1 in Wroclaw).
  - **332 apartments under construction** (1 in Warsaw, 126 units, and 1 in Wroclaw, 206 units).
  - **22,805 sq. m under construction.**
- **Under development** (as at 31 December 2015):
  - **3 projects under development, 5 stages** (1 stage in Ostoja-Wilanów, Warsaw; 2 stages in Apartamenty Innova II, Wroclaw; 2 stages in Villa Botánica, Powsin-Warsaw).
  - **717 apartments under development** in Ostoja-Wilanów, Warsaw (43 units); in Osiedle-Innova 2, Wroclaw (331\* units); in Villa Botánica, Powsin-Warsaw (343\* units).
  - **55,739 sq. m under development.**



# FPP Financial Highlights (PLN)

*Selected financial data FPP Group [in PLN million]*

	2009	2010	2011	2012	2013	2014	2015*
<b>Revenues</b>	170.2	172.0	208.8	138.9	93.4	173.9	89.9
<b>Gross sales profit</b>	47.3	53.4	53.2	35.6	16.2	40.4	19.5
<b>Gross margin</b>	28%	31%	25%	26%	17%	23%	22%
<b>Profit on operating activities</b>	45.9	32.7	28.0	21.0	3.6	33.2	9.2
<b>Net profit</b>	7.8	18.1	9.7	16.1	3.5	23.2	4.2
<b>Assets</b>	596.8	505.4	403.7	385.3	369.3	270.3	305.7
<b>Equity</b>	31.9	51.6	63.6	78.0	81.5	105.7	109.9
<b>Credit liabilities</b>	321.3	214.8	91.1	83.5	43.3	6.0	12.5

\* unaudited data.



## FPP. Completed Projects

---

Promotion: **Ostoja-Wilanów (Warsaw)**: 7 stages completed: 1,793 apartments and commercial units.



Ostoja-Wilanów (stage 1).  
Date of delivery: 2007  
No. of units: 180 apartments (14,466 sq. m).  
7 commercial units (832 sq. m).



Ostoja-Wilanów (stage 3).  
Date of delivery: 2009  
No. of units: 231 apartments (19,605 sq. m).



Ostoja-Wilanów (stage 2).  
Date of delivery: 2009  
No. of units: 221 apartments (19,944 sq. m).  
4 commercial units (600 sq. m).



Ostoja-Wilanów (stage 4).  
Date of delivery: 2009  
No. of units: 228 apartments (22,336 sq. m).



Ostoja-Wilanów (stage 5).  
Date of delivery: 2010.  
No. of units: 178 apartments (16,525 sq. m).  
13 commercial units (1,212 sq. m).



Ostoja-Wilanów (stage 6, building C3).  
Date of delivery: October 2011.  
No. of units: 262 apartments (16,278 sq. m).  
10 commercial units (kindergarden).

## FPP. Completed Projects

---

Promotion: ***Ostoja-Wilanów (Warsaw)***: 7 stages completed, 1,793 apartments and commercial units.



**Ostoja-Wilanów (stage 7, building C4).**  
**Date of delivery: December 2013.**  
**No. of units: 324 apartments (19,688 sq. m).**



**Ostoja-Wilanów (stage 6.A, building B4).**  
**Date of delivery: December 2015.**  
**No. of units: 136 apartments  
and 1 commercial unit (9,217 sq. m).**  
**Presold: 88% (as at 31 December 2015)**



**Kindergarden in Ostoja-Wilanów.**  
**Location: stage 6, building C3.**  
**Capacity: 110 children.**  
**Opened in September 2012.**  
**Indoor area: 596 sq. m (including the  
garden: 1,375 sq. m).**

## FPP. Completed Projects

---

Promotion: **Osiedle Innova (Wroclaw)**: 7 stages completed: 531 apartments and 4 commercial units.



Osiedle-Innova (stage I).

Date of delivery: March 2012.

No. of units: 70 apartments (3,763 sq. m).



Osiedle-Innova (stage II).

Date of delivery: June 2012.

No. of units: 71 apartments (3,757 sq. m).



Osiedle-Innova (stage III).

Date of delivery: September 2012

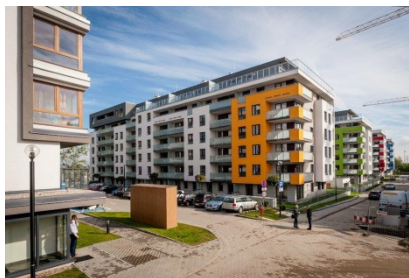
No. of units: 94 apartments  
4 commercial units (4,833 sq. m).



Osiedle-Innova (stage IV).

Date of delivery: September 2013.

No. of units: 92 apartments (4,468 sq. m).



Osiedle-Innova (stage V).

Date of delivery: September 2013.

No. of units: 92 apartments (4,468 sq. m).



Osiedle-Innova (stages VI and VII).

Date of delivery: October 2014.

No. of units: 112 apartments (6,453 sq. m).

## FPP. Completed Projects

---

Promotion: ***Osiedle Moderno (Wroclaw)***: completed (158 apartments).



**Osiedle-Moderno**

**Date of delivery: November 2015.**

**No. of units: 158 apartments (7,243 sq. m).**

**Presold: 98% (as at 31 December 2015)**





## FPP. Projects under Construction

---

- **2 stages under construction** (one in Ostoja-Wilanów, Warsaw, and one in Apartamenty-Innova, Wrocław).
- **332 apartments under construction in Warsaw and Wrocław.**
- **22,805 sq. m under construction**



**Ostoja-Wilanów, Warsaw, (stage 6.B. building C2).**  
**No. of units: 126 apartments (12,531 sq. m)**  
Breaking ground: February 2015.  
Progress to date: 39% (as at 31 December 2015).  
Delivery date: Q1 2017  
On sale since: July 2015 (53% presold at 31 December 2015).



**Apartamenty-Innova, Wrocław (Buildings 6.4 and 6.5)**  
**No. of units: 206 units (10,274 sq. m).**  
Breaking ground: November 2014.  
Progress to date: 53% (as at 31 December 2015).  
Delivery date: Q1 2017.  
On sale since: March 2015 (34% presold as at 31 December 2015).





*Apartamenty Innova (Building 6.4), Wrocław, December 2015*



## FPP. Projects under Development

---

**717 residential units** under development in Warsaw, Wroclaw, and Powsin (**55,739 sq. m** under development)



**Ostoja-Wilanów, Warsaw.**

Building B2: 43 apartments plus 3 commercial units (4,968.4 sq. m).  
- 43 apartments (PUM: 3,949.42 sq. m)  
- 3 commercial units (PUU: 1,018.98 sq. m)



**Apartmenty Innova, stages B and C, Wroclaw.**

Total no. of units (whole plot): 331\* apartments and 1 commercial unit (20,797\* sq.m)

**Stage B: Apartmenty Innova**

Building 6.3 (8,335 sq. m)  
No. of units: 120 apartments

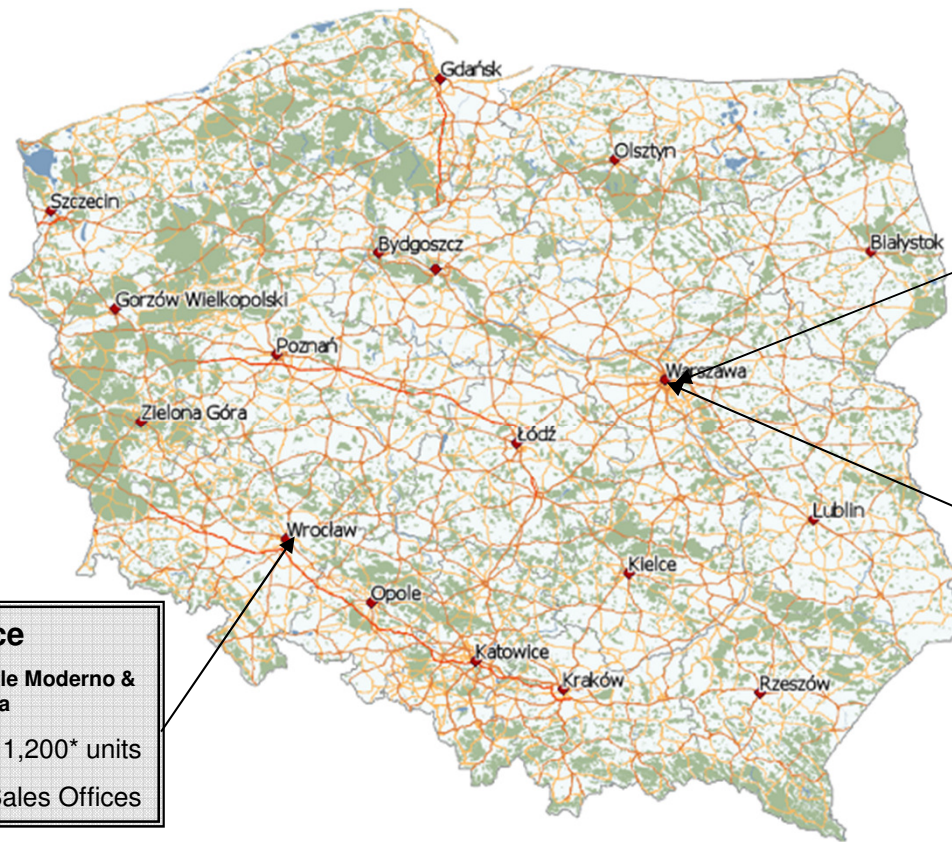
**Stage C, Apartmenty Innova.**

Building 6.1 (4,833 sq.m)  
No. of units: 83 apartments and 1 commercial unit  
Building 6.2. (7,629 sq. m)  
No. of units: 128 apartments



**Villa Botánica, Powsin (Warsaw).**

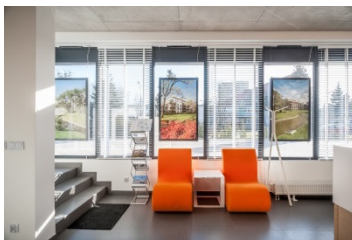
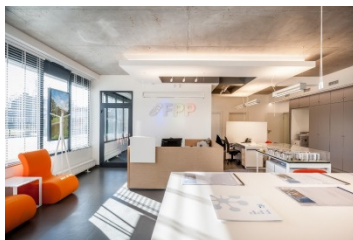
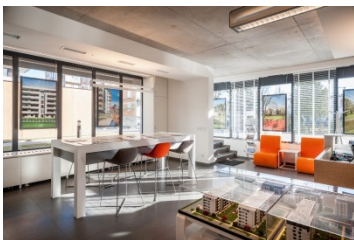
No. of units: 343\* units in 2 stages.  
Stage 1 (13,071 sq. m)  
Stage 2 (16,903 sq. m)



**Warsaw**  
**Company's Head Office**  
**Project – Ostoja Wilanów**  
**Sales Office**  
 • 1,968\* units

**Powin**  
**Project – Villa Botanica**  
 • 343\* apartments

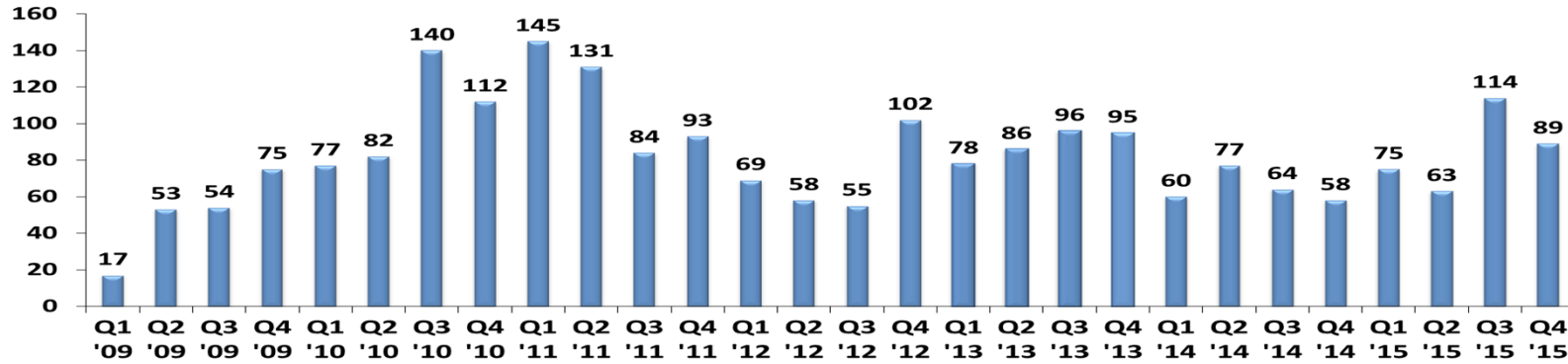
**Regional Office**  
**Projects: Osiedle Innova, Osiedle Moderno & Apartamenty Innova**  
 • 1,200\* units  
 • 3 Sales Offices



## FPP Quarterly Presales and Deliveries (since 2009)

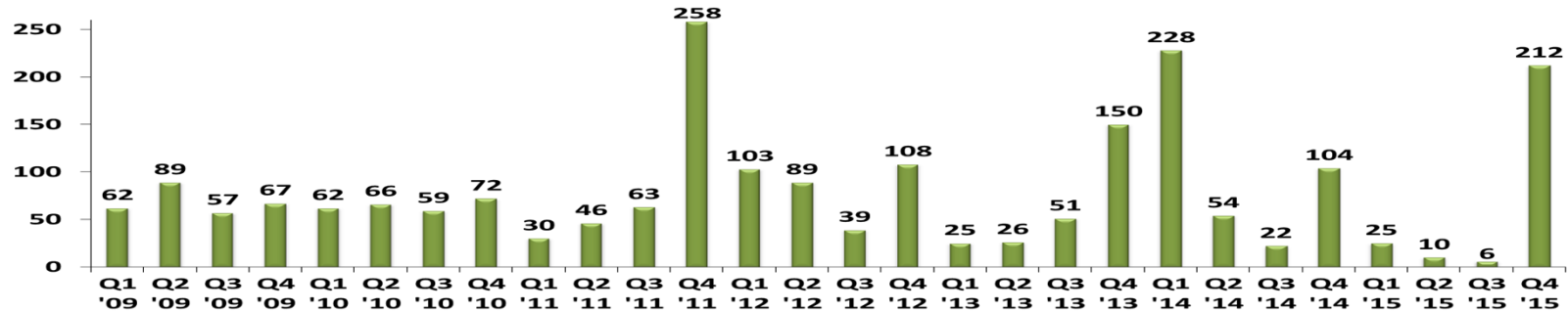
### Presales since 2009

	2009				2010				2011				2012				2013				2014				2015			
	Q1	Q2	Q3	Q4	Q1	Q2	Q3	Q4	Q1	Q2	Q3	Q4	Q1	Q2	Q3	Q4	Q1	Q2	Q3	Q4	Q1	Q2	Q3	Q4	Q1	Q2	Q3	Q4
Units	17	53	54	75	77	82	140	112	145	131	84	93	69	58	55	102	78	86	96	95	60	77	64	58	75	63	114	89

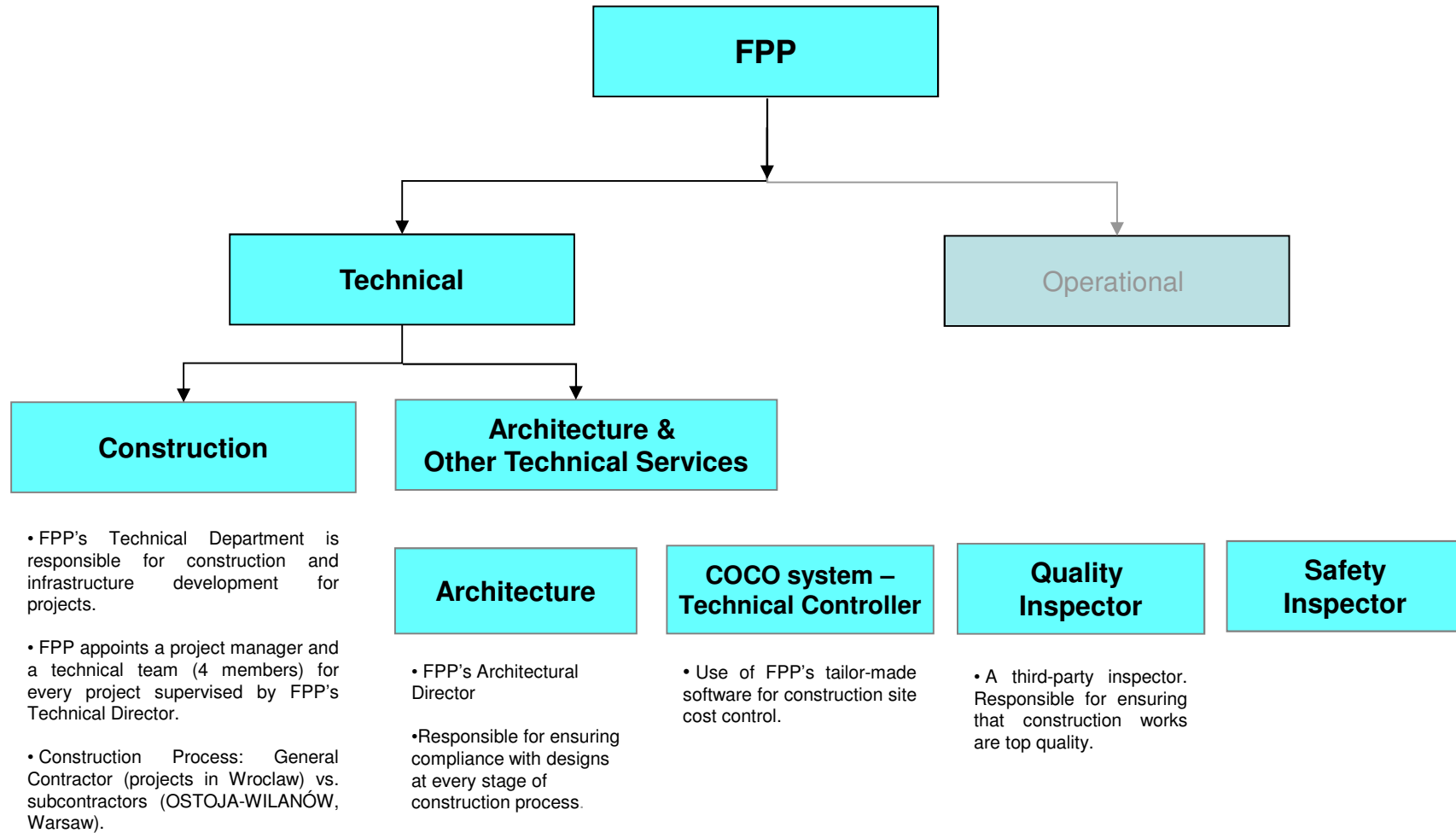


### Deliveries since 2009

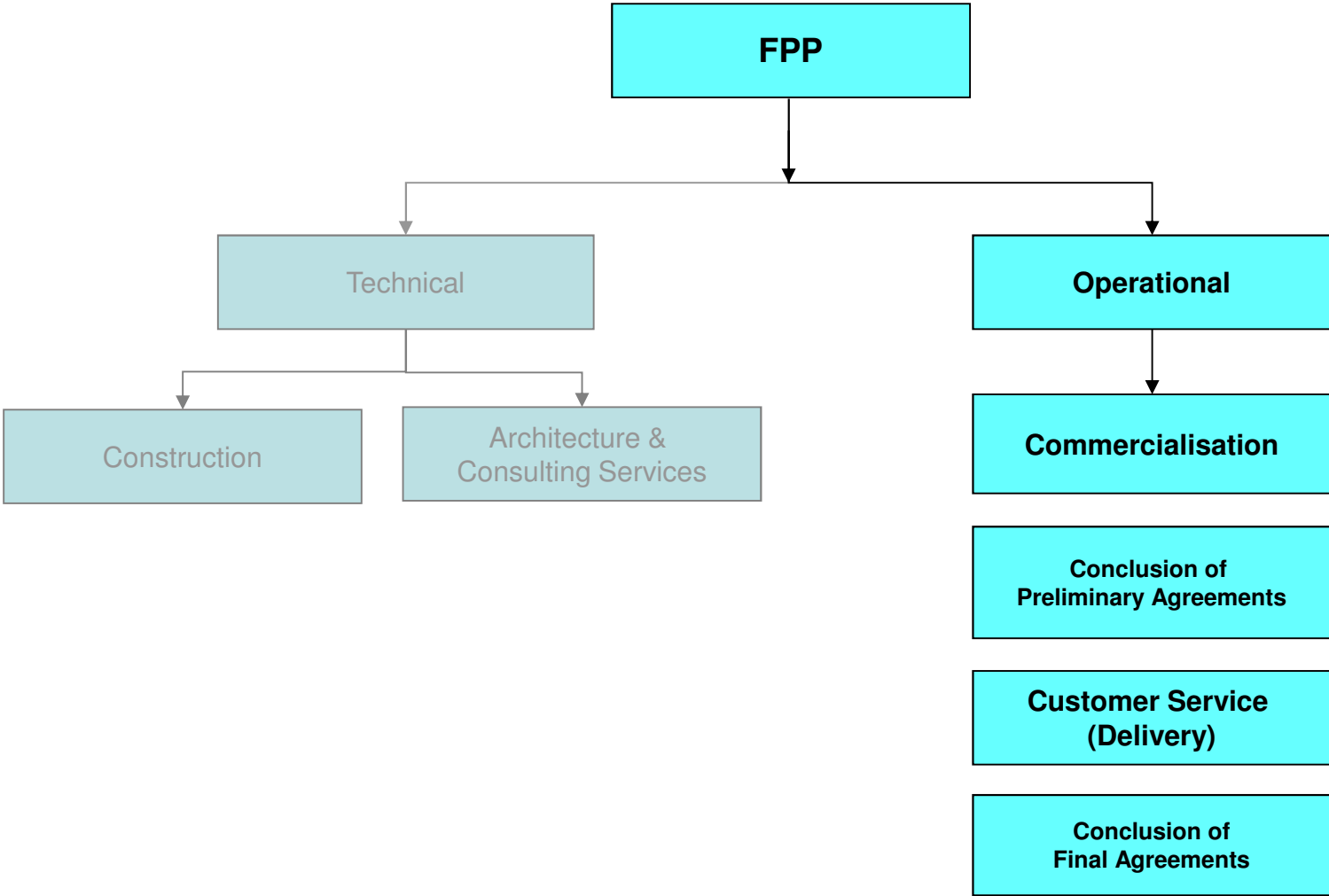
	2009				2010				2011				2012				2013				2014				2015			
	Q1	Q2	Q3	Q4	Q1	Q2	Q3	Q4	Q1	Q2	Q3	Q4	Q1	Q2	Q3	Q4	Q1	Q2	Q3	Q4	Q1	Q2	Q3	Q4	Q1	Q2	Q3	Q4
Units	62	89	57	67	62	66	59	72	30	46	63	258	103	89	39	108	25	26	51	150	228	54	22	104	25	10	6	212



## FPP. Internal Organisation: Technical Department (Construction, Architecture & Consulting)



FPP. Internal Organisation. Operational Department



## FPP. Internal Organisation

---

### Back Office Services

- **New development:**

- Technical, legal, and commercial review of potential plots/projects.
- Design of the product (on offer).
- Full study of pricing policy.
- Appraisals.

- **Financial Controller**

Monthly review of project costs and profitability.

- **Technical Controller**

(COCO system).  
Monthly review of costs of works using tailor-made software.

- **Marketing**

FPP general and special marketing campaigns.

### Sales Management

- **FPP commercial team.**

Additional external team (agents).

### Financial & Other Services

- Sales Administration** management:

- Preliminary and final agreements.
- Negotiations of agreements with customers.
- Management of payments from customers.
- Project Prospectus.
- All administrative work is in compliance with the new Act on Protection of Consumers (effective since 29 April 2012).

- Customer Service** management.

- Day-to-day assistance to customers.
- Direct telephone line.
- Delivery of apartments.
- Follow-up on customer claims, if any, relating to apartments.

- Legal Back Office.**

- Financial Services.**

- Financing for projects.
- Financial management.

- Accounting Services.**

- All accounting work handled at the FPP Head Office in Warsaw.

- Interior Design** management.

- Management of conversions in units if requested by customers.

## Case Study: FPP Model

Under FPP's current model, 85% of residential units are sold during the construction period. As soon as the construction is complete, 85% of units are delivered within 60 days of obtaining the (final) occupancy permit. Final sales agreements are signed within 60 days of the delivery of the apartment.

**FPP has successfully applied the model to all the projects since 2009, that is for the total of 11 projects (1,257 apartments):** three in Warsaw, Ostoja-Wilanów, building C3 (262 residential units, 2009-2011), building C4 (324 apartments, standard part - 170 units, 2011-2013), and building B4 (136 residential units, 2014-2015); eight in Wrocław, Osiedle-Innova, stage I (71 residential units, 2010-2012), stage II (70 units, 2011-2012), stage III (96 units, 2011-2012), stage IV (92 units, 2012-2013), stage V (92 units, 2012-2013), stages VI and VII (112 units, 2013-2014), and Osiedle-Moderno (158 residential units, 2014-2015)

The gross margin (business plan) of at least **20%-25%**.

Case study: building C3 (262 units, October 2009 - December 2011), Ostoja-Wilanów (Warsaw).

The data below shows FPP's 2011 performance. In total: 453 presales, 397 deliveries, and 411 final sales agreements. As indicated above, the model was repeated 9 times afterwards. In order to meet the above targets for building C3 (262 units) in Ostoja-Wilanów (Warsaw), FPP sold 9.8 units monthly during the construction period, delivered 7.15 units daily, and signed 5 final sales agreements (as notarial deeds) daily during Q4 2011. The promotion for building C3 in Ostoja-Wilanów involves a 262-apartment residential building located in Warsaw (Wilanów District). Ground was broken in October 2009, following the 2008 financial crunch. The building is located in an area (Miasteczko Wilanów) where several of FPP's competitors also operate.

Similar performance figures have been achieved as recently as in October - November 2015 with the completion of building OSIEDLE-MODERNO (158 apartments) in Wrocław. The plot of OSIEDLE-MODERNO had been bought in the spring of 2012, construction was successfully completed on 30 September 2015. As at 1 October 2015, 90% of the apartments had been sold.

**CONCLUSION: WITHIN A PERIOD OF 42 MONTHS, we achieve a return on our investment** (from project concept to delivery of units to customers).

		2009												2010												2011												2012											
		1	2	3	4	5	6	7	8	9	10	11	12	1	2	3	4	5	6	7	8	9	10	11	12	1	2	3	4	5	6	7	8	9	10	11	12	1	2	3	4	5	6						
Units	Months																																																
262	Construction	█																								█																		█					
258	Sale	█																								█																		█					
258	Delivery	█																								█																		█					
245	Final sales agreements	█																								█																		█					

## FPP Contact Details

---

### 1. Company's Head Office:

1. Address: Aleje Jerozolimskie, 94 (00-807) Warszawa
2. Tel.: + 48 22 24 28 888
3. Email: [biuro@fadesapolnord.pl](mailto:biuro@fadesapolnord.pl)
4. Website: [www.fadesapolnord.pl](http://www.fadesapolnord.pl)

### 2. Sales Office, Ostoja-Wilanów and Villa Botánica:

1. Address: ul. Hlonda, 10-B/U13, Miasteczko Wilanów, Warszawa
2. Tel.: + 48 22 550 13 70
3. Email: [ostojawilanow@fadesapolnord.pl](mailto:ostojawilanow@fadesapolnord.pl)
4. Website: [www.ostoja-wilanow.com](http://www.ostoja-wilanow.com)
5. Sales & Marketing Director: Małgorzata Gryc

### 4. Regional Office Wrocław:

1. Address: ul. Nyska 50, Krzyki, Wrocław
2. Tel.: +48 71 712 04 02
3. Regional Director: Krzysztof Winnicki

### 5. Sales Office, Osiedle-Innova, Osiedle-Moderno, and Apartamenty Innova:

1. Address: ul. Nyska 50, Krzyki, Wrocław
2. Tel.: +48 71 712 04 02
3. Email (Osiedle-Innova): [osiedleinnova@fadesapolnord.pl](mailto:osiedleinnova@fadesapolnord.pl)
4. Email (Osiedle-Moderno): [osiedlemoderno@fadesapolnord.pl](mailto:osiedlemoderno@fadesapolnord.pl)
5. Website (Osiedle-Innova): [www.osiedle-innova.com](http://www.osiedle-innova.com)
6. Website (Osiedle-Moderno) : [www.osiedlemoderno.com](http://www.osiedlemoderno.com)
7. Website (Apartamenty Innova): [www.apartamentyinnova.pl](http://www.apartamentyinnova.pl)







*Ostoja-Wilanów. Warsaw (January 2016)*

FADESA POLNORD POLSKA Spółka z o.o.  
Al. Jerozolimskie 94, 00-807 Warszawa (Poland)  
Phone: + 48 22 24 28 888, Fax: +48 22 242 88 89  
Email: [biuro@fadesapolnord.pl](mailto:biuro@fadesapolnord.pl)  
February 2016